



8/50-62 Victoria Road Drummoyne NSW

2 🚗

Positioned in a prominent and easily accessible location, this well-presented retail premises offers an outstanding opportunity for both investors and owner-occupiers. With strong street presence and excellent signage potential, the property benefits from consistent passing traffic and convenient customer access. The functional layout provides flexibility for a variety of retail or service-based businesses, complemented by the rare inclusion of on-site parking. Offered with a secure lease in place, this is a quality commercial asset in a tightly held precinct.

Key property features include:

- Open-plan retail space of approximately 180sqm, allowing versatile fit-out options

[For full version visit the website](https://www.mauveproperty.com.au/8639617)

Type : Offices
Building Size : 180 sqm
View : <https://www.mauveproperty.com.au/8639617>



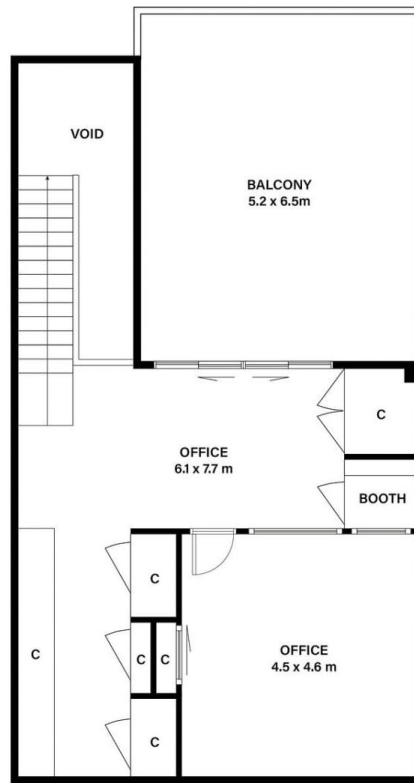
Nicholas Pagano
0433 345 877



Samuel Groutsis
0433 345 877



GROUND FLOOR



FIRST FLOOR

DRUMMOYNE SHOP 8/50-62 VICTORIA ROAD

Scale in metres. Indicative only. All information contained herein is obtained from sources we believe to be accurate. We cannot guarantee its accuracy. Interested persons should make and rely on their own enquiries.

MAUVE
PROPERTY